



Soapstone Valley and Melvin Hazen Parks & Trails Committee Report

An overview of the Committee's work to date and
planned efforts for the future

February 19, 2017



Table of Contents

INTRODUCTION	4
COMMITTEE STRUCTURE	5
SOAPSTONE VALLEY SEWER REHABILITATION PROJECT SUBCOMMITTEE	5
STORMWATER RUNOFF SUBCOMMITTEE	5
PROJECTS AND PARTNERSHIPS SUBCOMMITTEE	6
AN IN-DEPTH LOOK: SOAPSTONE VALLEY SEWER REHABILITATION PROJECT SUBCOMMITTEE	7
ENVIRONMENTAL ASSESSMENT (EA)	8
FUTURE PLANS	8
AN IN-DEPTH LOOK: STORMWATER RUNOFF SUBCOMMITTEE	9
HILLWOOD ESTATE, MUSEUM AND GARDENS RUNOFF PROJECT	9
RIVERSMART PARTNERSHIP	9
VAN NESS NORTH RUNOFF MITIGATION	9
FUTURE PLANS	10
AN IN-DEPTH LOOK: PROJECTS AND PARTNERSHIPS SUBCOMMITTEE	11
SOAPSTONE GHOST ROAD PROJECT	11
MELVIN HAZEN CLEANUP AND INVASIVE SPECIES REMOVAL	12
WINDOM PLACE AND ALBEMARLE ENTRANCE CLEANUPS AT SOAPSTONE	12
FUTURE PLANS	12
OTHER COMMITTEE WORK	14
WATER QUALITY PARTNERSHIP WITH UDC	14
ANC RESOLUTIONS	14
EXPANSION OF ROCK CREEK HISTORIC DISTRICT	14
HEARST PARK PROJECT & HYDROLOGY STUDY	15

LOOKING AHEAD	16
IMPLEMENT EXISTING STUDIES AND PLANS	16
ACT AS A COMMUNITY RESOURCE FOR THE HEARST PARK PROJECT	16
IDENTIFY AND SECURE SOURCES OF FUNDING FOR KEY WORK AND INITIATIVES	16
IMPROVE AND ENHANCE THE OVERALL QUALITY OF OUR PARKS	16
CONTINUE ENGAGING ANC 3F AND THE COMMUNITY AT-LARGE	16
APPENDIX	17
PUMP STATION REPORT	17
RESOLUTION: EXPANSION OF THE RCP HISTORIC DISTRICT	23
RESOLUTION: DOEE WATER QUALITY DATA AND INSIGHT	25
RESOLUTION: HEARST PARK PROJECT & HYDROLOGY STUDY	27

Introduction

The Soapstone Valley, Melvin Hazen, Parks & Trails Committee (SVMHP&T) was established by a formal resolution at the September 2015 meeting of ANC 3F with the following mission:

- Research and establish facts relating to public projects in and affecting Soapstone Valley and Melvin Hazen Parks;
- Coordinate with all relevant agencies, non-profits, businesses, and the community, to preserve the natural beauty and ecological health of our forests and creeks;
- Maintain and enhance public access by the community to parks and trails, including during public project work;
- Confer with experts at our discretion;
- Communicate and engage with the ANC 3F community and others as appropriate.

The Committee is a partnership between ANC 3F and the greater community. Since its inception, formal Committee members have included the following individuals:

- | | | |
|---------------------------------------|------------------------|------------------|
| • Com. Pat Jakopchek (<i>Chair</i>) | • Com. David Dickinson | • Kathleen Dell |
| • Alex Sanders (<i>Vice-Chair</i>) | • Com. Sally Gresham | • Marjorie Share |
| • Com. Adam Tope | • Com. Mary Beth Ray | • Bill Sittig |
| • Com. Shirley Adelstein | • David Bardin | • Cathy Wiss |
| | • Barbara Bates | |

The entire ANC 3F community is indebted to the above members, as well the Committee's non-voting members, partners and advocates. (Note: All but Adam Tope are current members.)

This report provides an overview of the Committee's work to date and plans going forward.

Committee Structure

In addition to a focus on general issues related to the Soapstone Valley and Melvin Hazen Parks, the SVMHP&T Committee formally established three subcommittees to provide specific attention to particular issues and activities within the ANC 3F community. These include:

Soapstone Valley Sewer Rehabilitation Project Subcommittee

The Soapstone Valley Sewer Rehabilitation Project subcommittee's mission is to evaluate the plans related to the proposed Soapstone Valley sewer rehabilitation project and use that information to help organize and advise ANC 3F on issues related to the project.

Committee Structure

The sub-committee is tasked to:

1. monitor DC Water's plans for its sanitary sewage facilities in Soapstone Valley, partly on NPS land, partly on DDOT land - (taking account of relationships to rehabilitation and maintenance of stream bed and trails);
2. prepare to analyze an Environmental Assessment (EA) which the NPS intends to issue for public comment with a 45-day deadline;
3. supply ANC 3F with timely information for its comments on the EA;
4. support ANC 3F follow up as may be appropriate.

Stormwater Runoff Subcommittee

The Stormwater Runoff subcommittee's mission is to minimize the effects of stormwater runoff on Soapstone Valley and Melvin Hazens' parks and trails.

The sub-committee is tasked to:

1. advocate for projects that reduce stormwater runoff into and within Soapstone and Melvin Hazen;
2. regularly liaise with relevant agencies and communities partners regarding stormwater mitigation efforts related to our parks and trails;
3. increase awareness and understanding of stormwater runoff issues amongst our fellow committee members, ANC 3F and the surrounding community;
4. increase the awareness of and participation in RiverSmart and other similar programs available to ANC 3F residents and property owners.

Projects and Partnerships Subcommittee

The Projects and Partnerships subcommittee's mission is to coordinate and implement projects related to the beautification and improvement of Soapstone Valley and Melvin Hazen's parks and trails.

The subcommittee is tasked to:

1. advocate for projects that increase the beauty and accessibility of Soapstone and Melvin Hazen;
2. assist in the planning and implementation of those projects, as appropriate;
3. engage regularly in dialogue with relevant agencies, officials and NGOs that facilitates effective 2-way communication with our parks' partners;
4. engage regularly in outreach and involvement with the surrounding community, with the goal of increasing its involvement with these parks;

An In-Depth Look: Soapstone Valley Sewer Rehabilitation Project Subcommittee

Because of the important and major impact on our community, the Soapstone Valley Sewer Rehabilitation Project was the primary catalyst for the establishment of the SVMHP&T Committee.

This project involves DC Water’s (formerly WASA) rehabilitation of sewers in the Soapstone Valley Park, from Connecticut Avenue, N.W. to Broad Branch Road, N.W. First proposed in 2013, “The Soapstone project presents particular challenges due to the lack of easy access to the sewers and manholes, the historical significance of Rock Creek Park, the park’s ecology and the large mass of tree canopy and special trees.”¹

Initially planned as companion project to a similar undertaking at northwest D.C.’s Glover-Archbold Park, the two endeavors were subsequently split with planning for the Glover-Archbold segment postponed. The Soapstone Rehabilitation will therefore serve as a precedent for other future projects in our city, thereby underscoring our community’s need to pay very close attention and provide educated feedback and supervision. Similar infrastructure challenges will occur in other forested settings throughout the city. The Soapstone project poses many new challenges requiring fresh ideas and perhaps new technologies and low-tech solutions.

In preparation of providing informed and detailed feedback and guidance to ANC 3F commissioners, Committee members undertook the following actions to educate themselves as well as position the community to influence this project and affect the highest caliber and best possible outcomes:

1. Engaged both DC Water and the National Parks Service in regular conversations about the project to clarify details, demonstrate interest and establish relationships with the individuals and organizations overseeing the Soapstone Rehabilitation;
2. Educated themselves about all aspects of the project, including the science, policies and technologies involved, specifically the Cured-in-Place Pipe (CIPP) lining technology and pump station technology, which has been proposed as a possible alternative;
 - a. Members organized a pumping station tour led by DC Water and consulting engineers to inspect existing stations and assess the potential impact that such structures would have on the Soapstone project
 - b. Members requested and were provided a detailed presentation at DC Water’s headquarters regarding the two alternatives under consideration (SEE APPENDIX FOR MORE DETAILS)
3. Advocated for increased soil conservation, rehabilitation and stabilization; decreased erosion; and reduced environmental impact and degradation; (e.g., loss of tree canopy and roots; mitigation of permanent paving) than initial options offered.

¹ <http://www.foresthillsconnection.com/home-front/dc-water-plans-massive-soapstone-sewer-rehab/>

Environmental Assessment (EA)

At this time, the most impactful action ANC 3F can take, in regards to the sewer rehabilitation project, will be to issue specific and persuasive comments on its preferred Environmental Assessment (EA) when the National Parks Service makes that document public. The SVMHP&T Committee has been told to expect the release of the EA in spring 2017. In preparation for and in advance of this release, the subcommittee is now gathering materials and draft responses to potential priority areas of concern issues and questions about the project.

Upon release of the EA, the Committee will offer advice in person and via written recommendations to guide both the logistics and content of ANC 3F's formal response.

Future Plans

Looking ahead, the Soapstone Valley Sewer Rehabilitation Project Subcommittee plans to focus on these key initiatives:

- Continuing to prepare for the eventual release of the project's Environmental Assessment (EA), by curating a collection of existing concerns, issues and dialogues with DC Water and the National Park Service (NPS), with an eye toward providing specific recommendations to ANC 3F commissioners for their official response to the EA;
- Continuing to provide oversight and feedback throughout the duration of the project and advocate to minimize adverse environmental impact and ecological degradation (e.g. loss of tree canopy);
- Publicize information about the project and highlight specific concerns for ANC 3F, with the goal of better informing and educating the public about the project.

An In-Depth Look: Stormwater Runoff Subcommittee

One of the greatest threats facing both Soapstone Valley and Melvin Hazen is the damage (particularly erosion) caused by stormwater runoff. In response to this ongoing hazard, this subcommittee has worked to build general awareness about the issue and increase support for mitigation efforts throughout ANC 3F.

Hillwood Estate, Museum and Gardens Runoff Project

One of the Committee’s strongest successes to date was working with the Hillwood Estate to help mitigate runoff issues caused by stormwater exiting the Estate’s grounds and affecting a downslope area near the easternmost border of Soapstone Valley.

Committee members identified the issue, brought it to the attention of Hillwood staff and worked with them to identify potential solutions to the problem. As a result of the Committee’s advocacy, Hillwood installed materials to reduce sediment and erosion, along with biodegradable coconut netting to protect shrubs and sedge until they are more fully established – helping protect this valuable community resource.



RiverSmart Partnership

The Committee has also worked to educate the ANC 3F community about the RiverSmart programs, a formal Department of Energy & Environment (DOEE) effort to help reduce stormwater runoff throughout the District. These programs offer evaluations, funding and rebates for green infrastructure projects to homeowners, multi-unit dwellings, schools and other properties.

A main goal of the Committee has been to increase participation in RiverSmart across ANC 3F, and take advantage of this wonderful existing resource within our community.

In May 2016, the full SVMHP&T Committee hosted Jo-Elle Burgard from RiverSmart Communities to learn more about the program, its efforts and potential funding available to members of ANC 3F, and has kept in regular contact with Ms. Burgard regarding potential RiverSmart opportunities throughout the community.

Van Ness North Runoff Mitigation

The Committee helped arrange a RiverSmart consultation for the Van Ness North building at 3001 Veazey Terrace NW. Situated directly upslope from Soapstone Valley Park, reducing runoff from this property would have a

considerable impact on reducing erosion and degradation to the park. After receiving the results of the RiverSmart audit, Committee members worked with the Van Ness North's board to engage an engineering firm that provided formal plans and cost estimates to enact the report's recommendations. We are currently assisting the building as it seeks funding for these projects with the hope that construction can begin in spring 2017.

The Committee's partnerships with both Van Ness North and the Hillwood Estate provide a model for increasing RiverSmart awareness and keeping participation throughout ANC 3F moving forward.

Future Plans

Looking ahead, the Stormwater Runoff Subcommittee plans to focus on these key initiatives:

- Increase the general ANC 3F community's knowledge of and participation in the RiverSmart programs;
- Identify and engage specific ANC 3F home and institutional property owners as "priority" candidates for stormwater runoff mitigation outreach;
- Provide assistance and guidance toward the execution of the recommendations of RiverSmart Audits, as available;
- Advocate for stormwater runoff mitigation efforts within public space projects being considered by ANC 3F that could affect Soapstone and Melvin Hazen.

An In-Depth Look: Projects and Partnerships

Subcommittee

In addition to educating itself and the community about the issues facing our parks, the Committee at-large has also prioritized the active engagement of stakeholders interested in preserving and improving Soapstone and Melvin Hazen. To that effect, this subcommittee has worked to strengthen our partnerships with the city agencies and non-governmental organizations whose interests overlap with ours, organize and coordinate opportunities to improve the parks' conditions; and attract and involve ANC 3F residents in these efforts.

Soapstone Ghost Road Project

One particular stretch of the Soapstone Valley trail is prone to increased muddiness and runoff. Whereas, the National Park Service manages almost the entire rest of the park, this section, from the trailhead on Albemarle east to the paved section of Audubon Terrace, is managed by the District's Department of Transportation (DDOT) and, as such, has been labeled the "Ghost Road."



During the Park Van Ness construction in late 2015 and early 2016, this stretch of trail saw a significant increase in foot traffic and use, which exacerbated existing problems of erosion, degradation and exposure of tree roots, and noticeably widened the path.

In response, subcommittee members partnered with the Rock Creek Conservancy (RCC) in January 2016 to lay down wood chips along the Ghost Road. This temporary solution significantly helped redefine the boundaries and

improve the conditions along this stretch of trail. Subcommittee members worked to gain DDOT's approval for the project, secure donations of the wood chips and other supplies, and helped successfully plan, promote and execute the event.



All told, over 50 volunteers gave their time as part of the project, significantly improving this section of our trails and building awareness

within the community of trail and park issues. Several volunteers, who were former residents of Forest Hills and had since moved to other neighborhoods, remarked that when they lived in Forest Hills, they had been unaware of Soapstone Valley and its entrance on Albemarle Street.

Melvin Hazen Cleanup and Invasive Species Removal

Building on the success of the Ghost Road Project, the subcommittee again partnered with the Rock Creek Conservancy in October 2016 for a volunteer activity in the western portion of Melvin Hazen. During the event, volunteers cared for a number of trees and saplings that had been planted by Casey Trees in 2015, and removed trash, debris and invasive species such as Bush Honeysuckle from the park.



Windom Place and Albemarle Entrance Cleanups at Soapstone

Subcommittee members continued to develop a strong relationship with the Rock Creek Conservancy with a very successful Martin Luther King Day service event in January 2017. Originally planned as a focused cleanup of the area near the Windom Place mini park, an abundance of volunteer responses allowed the subcommittee to add a second cleanup site near the park's entrance on Albemarle Street.



This second site was managed and coordinated in partnership with representatives from Mayor Bowser's office, allowing the subcommittee to also improve and strengthen its relationship with city stakeholders.

The event was a resounding success, as more than 60 volunteers participated and helped clear away 90 bags of trash from the park.

Going forward, the subcommittee, through a regular partnership with the Rock Creek Conservancy, is working to establish monthly cleanups in Soapstone and Melvin Hazen.

Future Plans

Looking ahead, the Projects and Partnerships Subcommittee plans to focus on these key initiatives:

- Continuing to partner with the Rock Creek Conservancy on projects to care for and improve Soapstone & Melvin Hazen (S&MH);
- Contact other like-minded organizations, such as the Potomac Appalachian Trail Club (PATC), to develop projects to improve and benefit S&MH;

- Work with Van Ness Main Street to better publicize the parks in our area and investigate other possible Main Street collaborations;
- Explore, identify and implement, collaborating with National Park Service (NPS), improved signage for the S&MH trails;
- Identify and develop a list of grants available to improve S&MH;
- Follow up on potential funding by contacting individuals, groups, and businesses to inform them about available opportunities and offer assistance to them in the application and funding processes.

Other Committee Work

In addition to the work done under the banner of its subcommittees, ANC 3F's SMHP&T Committee has taken an active role in working with the University of the District of Columbia to investigate and manage the water quality within our parks. Additionally, we provided ANC 3F at-large with analysis and recommendations on issues being considered by the full Committee, including three unanimously-passed resolutions.

Water Quality Partnership with UDC

In the past, higher than normal levels of E. coli have been detected in both Soapstone and Melvin Hazen's creeks. In an effort to learn more, clarify understanding and build ongoing data about the quality of water in our parks, especially Soapstone Creek, Committee members reached out to the University of the District of Columbia (UDC), which has an accredited state-of-the-art water quality laboratory. After meeting with Dr. Tolessa Deksissa, Director of the DC Water Resources Research Institute (funded in part by DOEE), and touring the lab, UDC agreed to identify funding and hire a graduate student to perform regular monitoring of Soapstone Valley, and to identify potentially harmful microbial or bacterial sources.

Regular reports from DOEE and the Water Lab are important since contaminated stormwater could be discharged into the Creek via a large outfall at 32nd and Albemarle Streets, and other sites. In contrast to a combined storm-and-sanitary system, Soapstone has a separate storm sewer system. (DOEE's written response to the ANC's Resolution requesting more information, stated that there was no cross-connections discharging sanitary sewage through the stormwater outfall into Soapstone.)

ANC Resolutions

Expansion of Rock Creek Historic District

Examined and supported the National Parks Service's proposal to expand the Rock Creek Park Historic District to include Soapstone Valley and Melvin Hazen, because of the integral part in the history of Rock Creek Park the parks play and their [what does their reference?] support for the Park's significance as a historic cultural landscape.

DOEE Water Quality Data and Insight

Highlighted the E. Coli "impairment" of streams in Soapstone and Melvin Hazen, while calling on DOEE to provide data, benchmarks and an explanation of the problem, as well as identifying the source of the E. Coli contamination.

Hearst Park Project & Hydrology Study

Expressed community concerns regarding stormwater runoff from the proposed Hearst Recreation Center Park and Pool Project, and requested the formal involvement of DOEE (and any other applicable city agency) in the planning of the design phase of the project, and detailed hydrology and geologic study of the proposed site and monthly status report regarding these requests.

Looking Ahead

Moving forward, the Committee will continue to build on the successes listed above, enhancing the work of our subcommittees, and focusing on the following specific objectives:

Implement Existing Studies and Plans

A number of studies and plans related to Soapstone Valley and Melvin Hazen have been generated in the past, including specific large-scale stormwater runoff mitigation projects for Melvin Hazen and water quality improvements for Soapstone Valley's creeks. Going forward, the Committee will focus on collecting these existing studies and pushing for their implementation, as appropriate.

Act as a Community Resource for the Hearst Park Project

The Committee will continue to act as an advocate for efforts that will protect and improve Melvin Hazen during the planning, construction and permanent phases of the Hearst Recreation Center Park and Pool Project. Also, it will continue to push for the involvement of city agencies it feels will benefit the project's planning, execution and final results, and also monitor the hydrology and geologic concerns previously expressed.

Identify and Secure Sources of Funding for Key Work and Initiatives

In addition to its work listed above, the Projects and Partnerships Subcommittee will be tasked with developing a list of grants available for projects that affect Melvin Hazen and Soapstone, with the goal of preparing and planning applications when funding opportunities become available.

Improve and Enhance the Overall Quality of Our Parks

The Committee will identify and advocate for long-term enhancements to Soapstone and Melvin Hazen, including but not limited to new signage and wayfinding, upgraded entrances, trail restoration and large-scale improvements such as overlooks and partnered programs with the Rock Creek Conservancy,

Continue engaging ANC 3F and the Community At-Large

The Committee will continue to act as an advocate for the continued health of Soapstone Valley and Melvin Hazen Parks, by promoting its work to the public, attracting and engaging new Committee members, and providing analysis and recommendations to ANC 3F commissioners regarding issues that affect these invaluable resources for our community.

APPENDIX

Pump Station Report

Report Date: 1/11/16 by Marjorie Share & Sally Gresham

Soapstone Valley/Melvin Hazen, Parks & Trails Committee

Pumping Station Tour - November 20, 2015

PURPOSE: See first-hand two DC Water pumping stations in order to discuss and assess pumping station (PS) feasibility for Soapstone Valley. This proposed option to CIPP rehabilitation arose from a request from the National Park Service to “*move the pipes out the Park.*” The size and capacity of Earl Place is more similar to what is proposed for the Soapstone Valley sewer rehab. The Upper Anacostia Station shows the problems that can arise when debris outweighs flow.

MET AT: Earl Place Pumping Station -- 2010 Earl Place, N.E.

INTRODUCTIONS

- I. Introductions of those present:
 - Pat Jakopchek - ANC Commissioner
 - Sally Gresham - ANC Commissioner
 - Shirley Adelstein - ANC Commissioner
 - William Sittig
 - Kate Dell
 - Marjorie Share
 - David Bardin (could not attend due to illness)
 - Eric Lienhard - Hazen & Sawyer, Consultant Design Manager for Soapstone
 - Bisrat Abebe - DC Water, Project Manager for Soapstone
 - James Peaco - DC Water, Manager of Pumping Operations
 - Wayne Reed - DC Water, General Foreman, Pumping Operations
 - Haile Tsehayu – DC Water, Supervisor Utility Design Services

PROJECT HISTORY & PROCESS

- I. History of project and where in the process we now stand (Eric and Bisrat)

- Environmental Assessment has been completed according to NEPA
- Plan detailed alternatives in response to NPS's request
 1. Lining option using CIPP method and existing pipes--option favored by DC Water. DC Water will rehab stream & bank and provide stabilization to protect the "assets" (pipes in Park).
COST: CIPP work is a small percentage of the total project costs. Manholes & stream/bank restoration comprise most of cost.
 - CIPP Cost: \$5 Million+- = Lining of pipes, stream & bank remediation, "asset" protection & stabilization and 2 stormwater outfalls' (Albemarle & Linnean) remediation.
 2. Pumping station option (reason for today's tour). Resulted from NPS request for "pipes out the Park." DC Water amended NPS's request from "pipes out of park" to "sewage out of park." DCW reports that NPS's intent to get 'sewage' out of park was the request of one individual who is no longer with NPS. To remove existing pipes, even more trees would have to be removed.
 NOTE: If pumping stations are constructed, we were told that the pipes will be left *without* stream or bank stabilization work by DC Water.
 - Pumping Stations Cost – \$10 Million+- for 2 PSs only. \$12 to 15 million for 2 pumping stations, piping (for rerouting 70% of sewage flow) and 2 stormwater outfalls. No stream or bank stabilization work.
- Environmental Assessment submitted to NPS in early September, 2015.
- Comments from NPS to begin January 2016 with February/March NPS target date for final EA. When the EA is released, there will be a public comment period, followed by a process to analyze comments. The plan is to allow 45 days (rather than the usual 30) for public comments.
- DC Water revises/resubmits to NPS if necessary.
- Once EA approval by NPS, construction can begin. End of 2017 was DC Water's original target date.
- The Potomac Pumping Station is an example pumping station on Park Service land.
- Personnel changes: ARCADIS' program manager (international design, engineering and management services company) coming over to DC Water. They were consultants on rehabilitation of The 50-mile long Potomac Interceptor (gravity sewer system that transports wastewater to the Blue Plains Advanced Wastewater Treatment Plant). Bisrat will be moving from the Soapstone project to another area within DCW.
- Odor: Discussion of odor in Soapstone Valley; told odors coming from manholes.
- Need for trail restoration. Discussion of who is responsible and when that occurs.
- Park Van Ness - No internal pumping of sewage up from below Conn Ave floors to public alley as originally permitted. All PVN sewage gravity fed down into existing sewage pipes into park as done in past. The need for the public alley pumping station is to 'push' (route) sewage from the Park Van Ness and

Park Connecticut buildings to the optional Conn Ave/Albemarle/DDOT land route (thus complying with 'Pipes/Sewage out of the Park' option).

PUMPING STATIONS

Earl Place

- This is one of 9 sanitary pumping stations (sewage) in the city; DC has 16 storm water pumping stations, and 5 potable water stations. City has very few pumping stations because topography works in its favor ("gravity flow").
- Both Soapstone Valley (SV) Pumping Stations would be approximate size of Earl Place Station, with more highly-computerized equipment, to enable most maintenance to be achieved remotely.
- Much to our surprise, there was no apparent noise nor foul odor (or any odor at all).
- Brick 10-foot wide by 12-foot deep structure, adjacent to CSX Railroad, constructed in 1926 with two 300 GPM pumps. Station rehabilitation included new pumps, piping, valves, controls, HVAC replacement and wet well trash basket. (See Photos #1 to #4, below.)
- Pumps (2) are 20 feet down into a well, which is accessed by a wall ladder. (Average pump life = 5-10 years.)
- Pointed out clear road access for emergency and cleaning. This would pose a challenge at the Public Alley Pumping Station (PS #1) location thus requiring the need for the internal access road across the Park. Van Ness North Pumping Station (PS #2) has a road leading up to the front, and it is surrounded by a parking lot. Fire trucks would have no problem.
- Weekly cleaning of bar rack in exterior wet well is necessary. Minor odors come from this cleaning (time frame of 2 to 4 hours max).
- Soapstone Valley (SV) Pumping Stations: requires a dual feed electrical source needs to have an emergency generator hook-up. Generators are quiet.
- Footprint of both Soapstone pumping stations will require emergency generators.
- Service entry is necessary at both pumping stations.
- Eric sketched an elevation of the Public Alley Pumping Station that shows accommodations for the 40-foot drop to the stream bed. Pumping Station #1 is basically an elevator shaft 10'w x 12'D x 40'H+ building. (See Drawing #1, below.)

Upper Anacostia Station

- Original burned down, and replaced in the last 10 years with this facility.

- Much larger building than proposed SV stations, although capacity may be similar. It is near high-density development.
- Most maintenance (cleaning) and emergency issues that arise can be maintained remotely.
- Problems arise at this station because even with pumps running at full speed, excessive debris (for the amount of flow) accumulates in the wet well, which can produce odors and require heavy cleaning.
- Once-a-week maintenance of bar rack to pull “stuff” out produces odors.
- Baby and disposable wipes flushed down toilets cause enormous problems. Those in combination with oils create hardened masses.
- Occasionally, need to change out a pump (see above for time frame).
- There was more noise and foul odors here than Earl Place.

NEXT STEPS

- Eric sketched a rough plan and elevation for a proposed Public Alley Pumping Station #1. It shows a 40-foot high by 10 x 12 elevator shaft at the rear fall of the public alley between the two apartment buildings (Park Van Ness and Park Connecticut). Per Eric more design is needed on this particular pumping station. There are site challenges-- topography, public alley and building constraints .as well as accessibility for regular servicing and emergency vehicle/people needs.

- Group discussion among ourselves, and creation of a list of questions for Eric.

- It is important to look at the two plans in terms of how each will impact the ecology, as well as Van Ness Apartment complex, Albemarle Street, Audubon Terrace. In each scenario, how many trees will be removed and affected? How will soil and erosion in each case be impacted? How will nearby residents be affected? Have all options been explored?

- How does the sewer work intersect with trail and park conservation and preservation?

- What improvements can result?

Photo # 1



Photo # 2



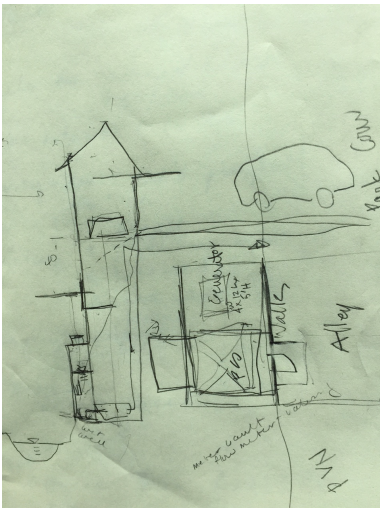
Photo # 3



Photo # 4



Drawing # 1



RESOLUTION: Expansion of the RCP Historic District

Government of the District of Columbia
ADVISORY NEIGHBORHOOD COMMISSION 3F
Van Ness • North Cleveland Park • Wakefield • Forest Hills

3F01 – David Dickinson
3F02 – Shirley Adelstein, Treasurer
3F03 – Mary Beth Ray
3F04 – Sally Gresham
3F05 – Andrea Molod, Secretary
3F06 – Malachy Nugent, Chair
3F07 – Patrick Jakopchek, Vice Chair



4401-A Connecticut Ave, N.W.
Box 244, Washington, D.C. 20008
commissioners@anc3f.com
www.anc3f.com
202-670-7ANC
Twitter: @ANC3F

RESOLUTION REGARDING THE EXPANSION OF THE ROCK CREEK PARK HISTORIC DISTRICT

September 20, 2016

WHEREAS, the Rock Creek Park (RCP) Historic District was listed in 1991 on the National Register of Historic Places; and

WHEREAS, the National Park Service (NPS), supported by DC Historic Preservation Review Board (HPRB) staff, proposed in 2014 to expand the historic district boundary to include several "tributary" parks -- among them Soapstone Valley Trail and Melvin Hazen; and

WHEREAS, the proposed Historic District Amendment expands periods of significance to include archaeological resources associated with Native American settlement and occupation between 3,000 BC to 600 BC, colonial settlement of the valley between AD 1740 and 1800, and the existing 1791 to 1941 period of significance to 1972; and

WHEREAS, archaeological evidence suggests temporary camps within Soapstone Valley Trail date back to 2,000 B.C., and United States Coast and Geodetic Survey information shows modern usage as far back as 1892; and

WHEREAS, Melvin Hazen Park trail was developed in 1944 as a central component of a master plan to set aside land "for naturalists, scouts, conservationists, and nature lovers;" and

WHEREAS, the Historic Preservation Office of Washington DC (HPO) holds that connector reservations such as Soapstone Valley and Melvin Hazen, "are integral to the history of Rock Creek Park and support the Park's significance as a historic cultural landscape;" and

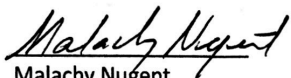
WHEREAS, one of the expressed purposes for which the Soapstone and Melvin Hazen Parks & Trails Committee was established is to "research and establish facts relating to public projects in and affecting Soapstone Valley and Melvin Hazen parks.;" and

[WHEREAS, ANC 3F's Soapstone Valley, Melvin C Hazen, Parks and Trails Committee approved the text of this resolution at its meeting on September 12 2016, which was properly noticed and at which a quorum was present, by a vote of _ in favor, _ opposed, and _ abstaining (- -);]

NOW THEREFORE BE IT RESOLVED, that ANC 3F officially supports the National Parks Service's proposal to expand the Rock Creek Park Historic District.

BE IT FURTHER RESOLVED that Commissioner Pat Jakopchek is authorized to speak on behalf of ANC 3F on this matter.

ANC 3F approved this resolution at its meeting on September 20, 2016, which was properly noticed and at which a quorum was present, by a vote of 7 in favor, 0 opposed, and 0 abstaining.


Malachy Nugent
Chair, ANC 3F

RESOLUTION: DOEE Water Quality Data and Insight

Government of the District of Columbia
ADVISORY NEIGHBORHOOD COMMISSION 3F
North Cleveland Park • Forest Hills • Tenleytown

3F01 – Adam Tope, Chair
3F02 – Shirley Adelstein
3F03 – Mary Beth Ray
3F04 – Sally Gresham
3F05 – Andrea Molod, Secretary
3F06 – Malachy Nugent, Treasurer
3F07 – Patrick Jakopchek



Box 244
4401-A Connecticut Avenue, N.W.
Washington, D.C. 20008
commissioners@anc3f.us
www.anc3f.us
202-670-7ANC
Twitter: @ANC3F

Resolution Requesting DOEE Provide Data and Insight into the Water Quality of Soapstone Valley and Melvin Hazen Parks

Whereas ANC 3F is graced with beautiful natural parkland and streams including Soapstone Valley Park and Creek, and Melvin C. Hazen Park and Tributary;

Whereas ANC 3F established a committee in 2013 to protect the natural beauty of Soapstone Valley, and that committee was re-instituted this year to include both Soapstone and Melvin Hazen;

Whereas one of the key objectives of the Soapstone, Melvin Hazen, Parks & Trail Committee is to ensure clean water in our creeks;

Whereas water in Soapstone and Hazen appears dirty, often plagued by algae blooms, and smells like sewage;

Whereas DDOE has reported to Congress and the EPA that water quality in Soapstone and Melvin Hazen is "impaired" by E. coli, but has not reported actually measured statistics;

Whereas members of ANC3F and the Soapstone, Melvin Hazen, Parks & Trail Committee have requested data from DOEE relating to E. coli statistics, a meaningful benchmark to understand the meaning of the data, and data that identifies whether the source of the E. coli is human or animal, but DOEE has not provided an adequate response;

Whereas members of the Soapstone, Melvin Hazen, Parks & Trail Committee voted unanimously to recommend that ANC3F adopt this resolution;

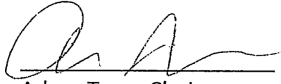
NOW THEREFORE BE IT RESOLVED that DOEE provide E. coli data for the past 12 months specific to Soapstone Valley Creek and Melvin Hazen Tributary;

BE IT FURTHER RESOLVED that DOEE provide a benchmark and interpretation of the data so that lay persons can understand the scope of the problem;

BE IT FURTHER RESOLVED that DOEE provide data that identifies whether the source of the E. coli in Soapstone and Hazen comes from human waste or animal waste, so that appropriate measures can be taken to correct the problem;

BE IT FURTHER RESOLVED that Commissioner Pat Jakopchek is authorized to represent ANC 3F in all matters relating to the pursuit of this data with DOEE.

ANC 3F voted in favor of this resolution at its meeting on November 17 2015, which was properly noticed and at which a quorum was present, by a vote of 7 in favor, 0 opposed, and 0 abstaining.



Adam Tope, Chair

ANC Use

Sponsor	Receiving Agency/Entity	Topic

RESOLUTION: Hearst Park Project & Hydrology Study

Government of the District of Columbia
ADVISORY NEIGHBORHOOD COMMISSION 3F
Van Ness • North Cleveland Park • Wakefield • Forest Hills

3F01 – David Dickinson
3F02 – Shirley Adelstein, Treasurer
3F03 – Mary Beth Ray
3F04 – Sally Gresham
3F05 – Andrea Molod, Secretary
3F06 – Malachy Nugent, Chair
3F07 – Patrick Jakopchek, Vice Chair



4401-A Connecticut Ave, N.W.
Box 244, Washington, D.C. 20008
commissioners@anc3f.com
www.anc3f.com
202-670-7ANC
Twitter: @ANC3F

RESOLUTION REQUESTING FORMAL INVOLVEMENT OF DOEE IN THE DESIGN OF THE HEARST RECREATION CENTER PROJECT AND HYDROLOGY STUDY

September 20, 2016

WHEREAS, ANC 3F is graced with beautiful natural parkland and streams including Soapstone Valley Park and Creek, and Melvin C. Hazen Park and Tributary;

WHEREAS, ANC 3F established this Soapstone Valley & Melvin C Hazen, Parks and Trails Committee to protect the natural beauty of both Soapstone Valley Park and Melvin Hazen;

WHEREAS, one of the key objectives of the Soapstone and Melvin Hazen, Parks & Trails Committee is to protect those parks and mitigate the effects of storm water runoff;

WHEREAS, the District of Columbia’s Department of Parks and Recreation (DPR) and Department of General Services (DGS) have commenced the formal community outreach and design phase for the Hearst Recreation Center (known as Hearst Park);

WHEREAS, significant water runoff issues already exist at Hearst Park and affect nearby areas of significant natural beauty and history, like Melvin Hazen Park and the Springland Farm Community;

WHEREAS, the District’s Department of Energy & Environment (DOEE) has identified numerous potential projects in and around the proposed Hearst Park site that would mitigate the effects of storm water runoff on nearby areas;

WHEREAS, DOEE has indicated a need to be formally invited by DPR and DGS before it can participate in the design phase for the Hearst Recreation Center project;

WHEREAS, Mayor Bowser’s administration has prioritized the development of an efficient and effective 21st century government;

WHEREAS, ANC 3F created the Soapstone and Melvin Hazen Parks & Trails Committee to “research and establish facts relating to public projects in and affecting Soapstone Valley and Melvin Hazen parks;” and

[WHEREAS, ANC 3F’s Soapstone Valley, Melvin C Hazen, Parks and Trails Committee approved

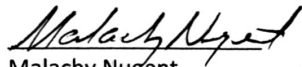
the text of this resolution at its meeting on September 12 2016, which was properly noticed and at which a quorum was present, by a vote of _ in favor, _ opposed, and _ abstaining (- -);]

NOW THEREFORE BE IT RESOLVED, that ANC 3F request that

- a) DPR and DGS formally invite DOEE and any other applicable city agency to participate in the design phase of the design phase for the Hearst Recreation Center; and
- b) that DOEE undertake or contract for a hydrology study to better understand the movement, distribution, and quality of water from the Hearst Recreation Center site, as well as this water's runoff affects on nearby areas.

BE IT FURTHER RESOLVED, that Commissioner Pat Jakopchek is authorized to represent ANC 3F in all matters relating to the pursuit of this data with DOEE.

ANC 3F approved this resolution at its meeting on September 20, 2016, which was properly noticed and at which a quorum was present, by a vote of 7 in favor, 0 opposed, and 0 abstaining.


Malachy Nugent
Chair, ANC 3F