



# Rock Creek Park

Nature Center Complex  
Development Concept Plan

Welcome!  
Public Open House

November 2016



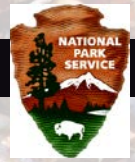
# Tonight's Agenda

- Purpose of this planning project
- Issues and objectives the plan hopes to address
- Proposed actions and improvements under consideration
- How you can participate in the planning process
- Opportunities to provide comments



## Purpose of the Plan

- Provide guidance for the improvement and management of the Nature Center Complex that includes the Nature Center, Horse Center, maintenance area, and their surroundings
- Protect park resources, enhance visitor experience, and ensure long-term financial feasibility



# Need

- Improve visitor experience
- Ensure facilities meet the needs of visitors and staff
- Enhance accessibility and circulation
- Address maintenance backlog



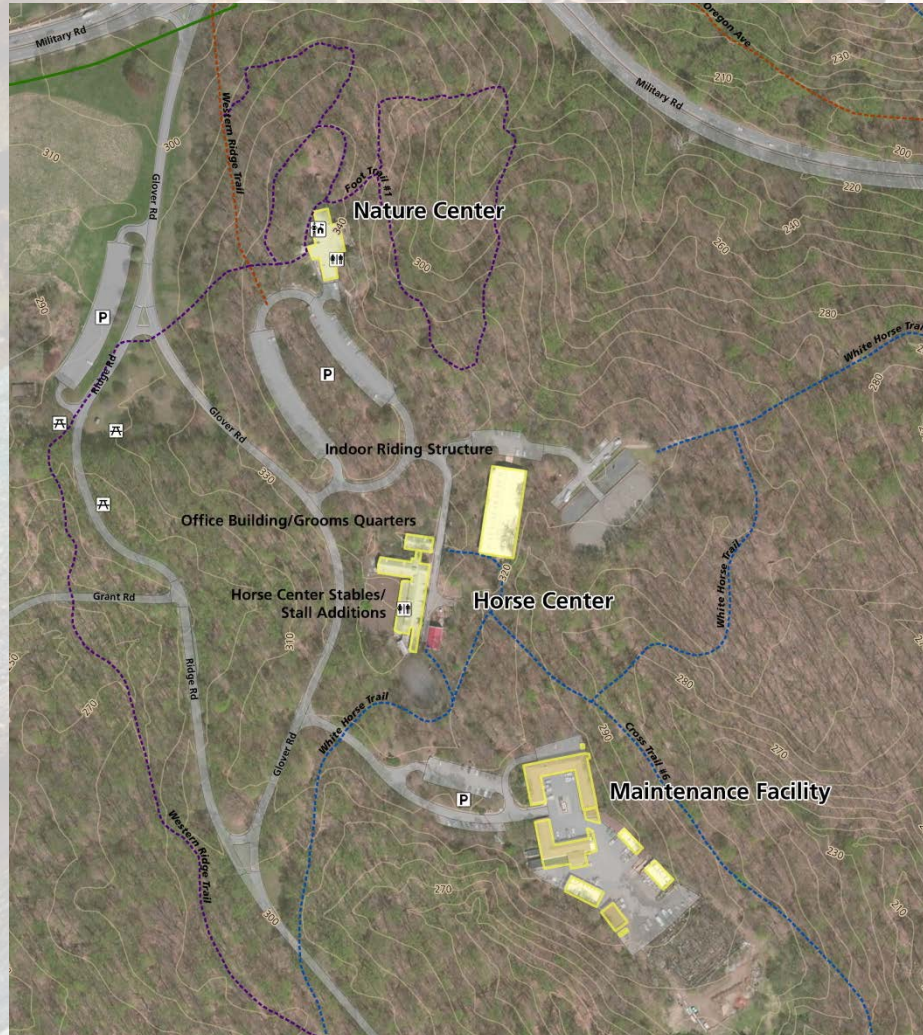


# Objectives

- Interpretation and Education
- Public Use and Enjoyment
- Access and Circulation
- Park Operation
- Cultural Resources
- Natural Resources
- Environmental Sustainability



# Project Area





# Project Area

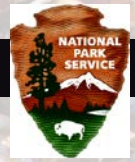




# Help us envision the future!

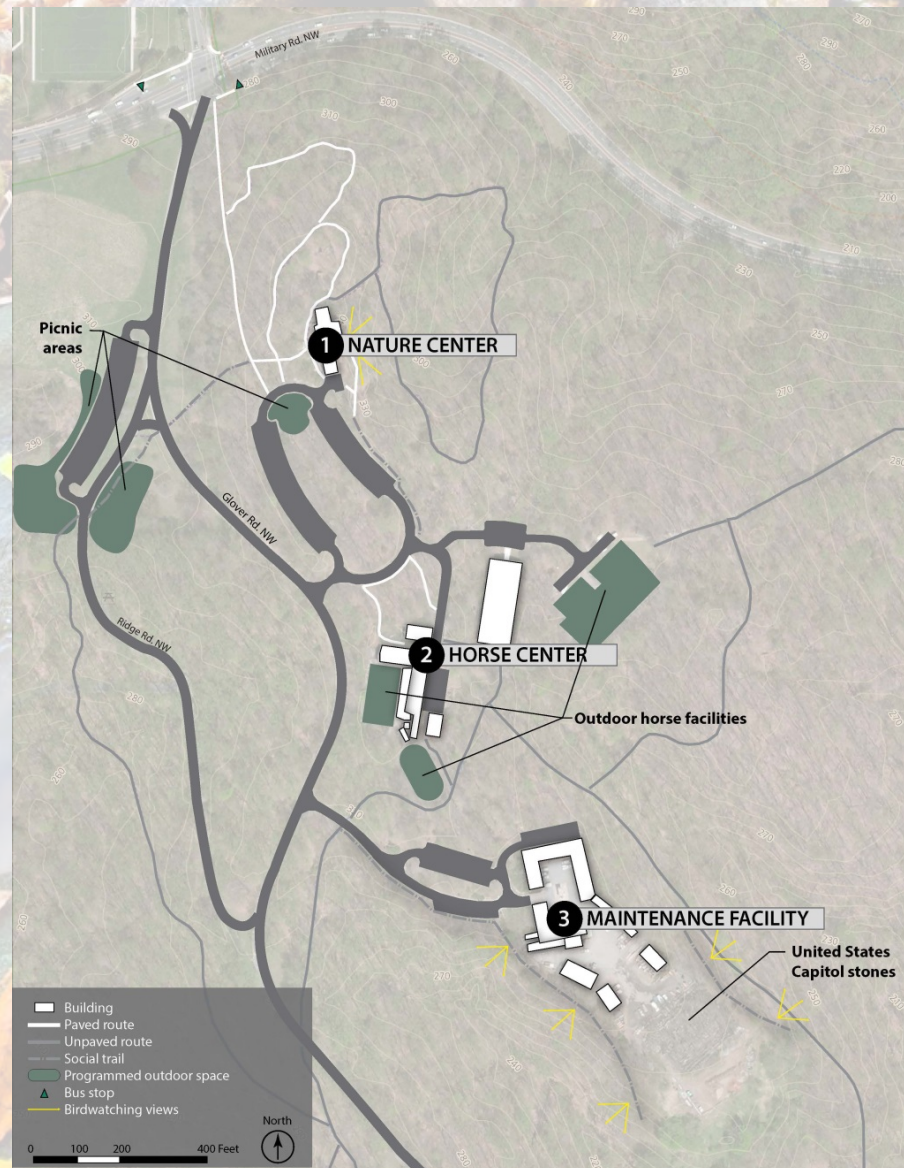
- The park has developed preliminary concepts for the future of the Nature Center Complex.
- We want your feedback on these preliminary concepts, as well as your other ideas for the area.
- Other than continuing present management practices and implementing previously approved plans (no action), the preliminary actions concepts include three action concepts:
  - Fix It
  - Escape from the City
  - Green Campus





# Concept 1: No Action

- No new construction is proposed
- Rock Creek Park would continue to make routine repairs to the existing Nature Center Complex facilities
- Previously approved plans would be implemented

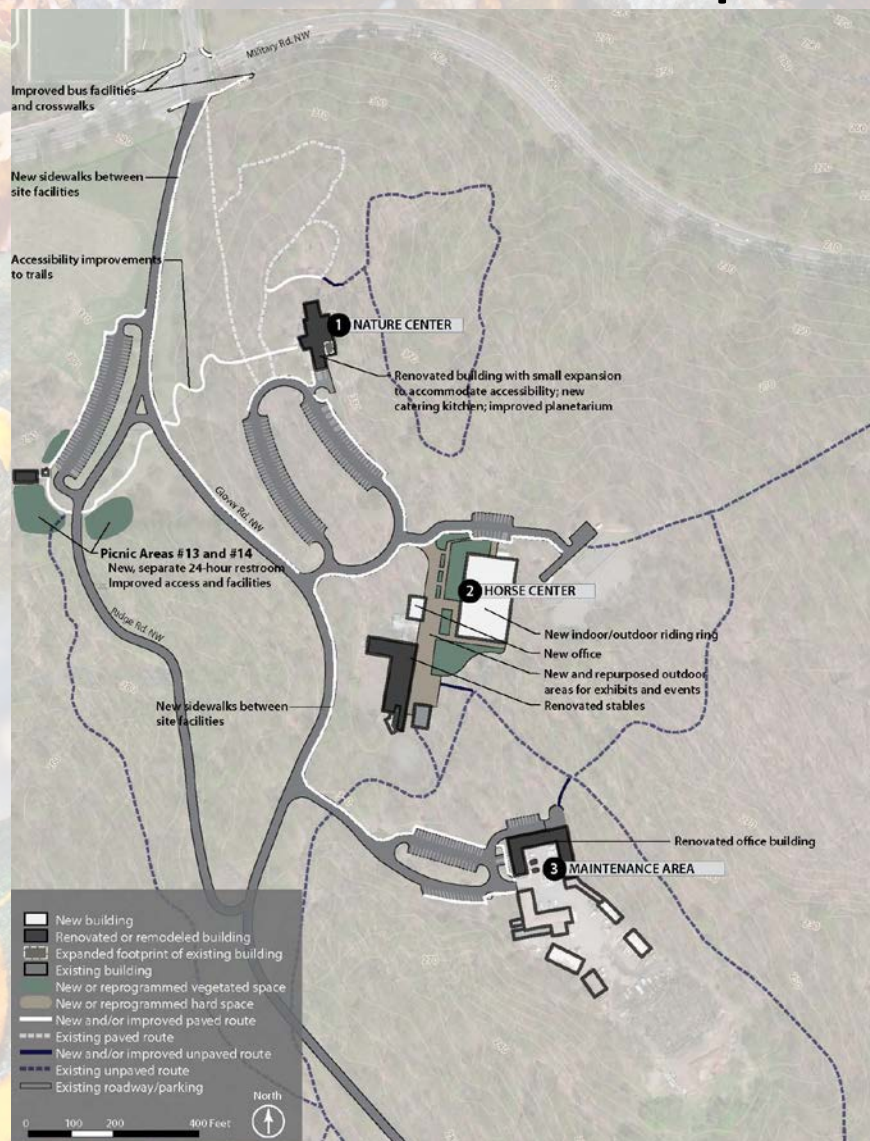


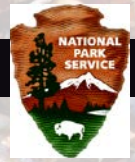


# Elements Common to All Action Concepts

## Highlights include:

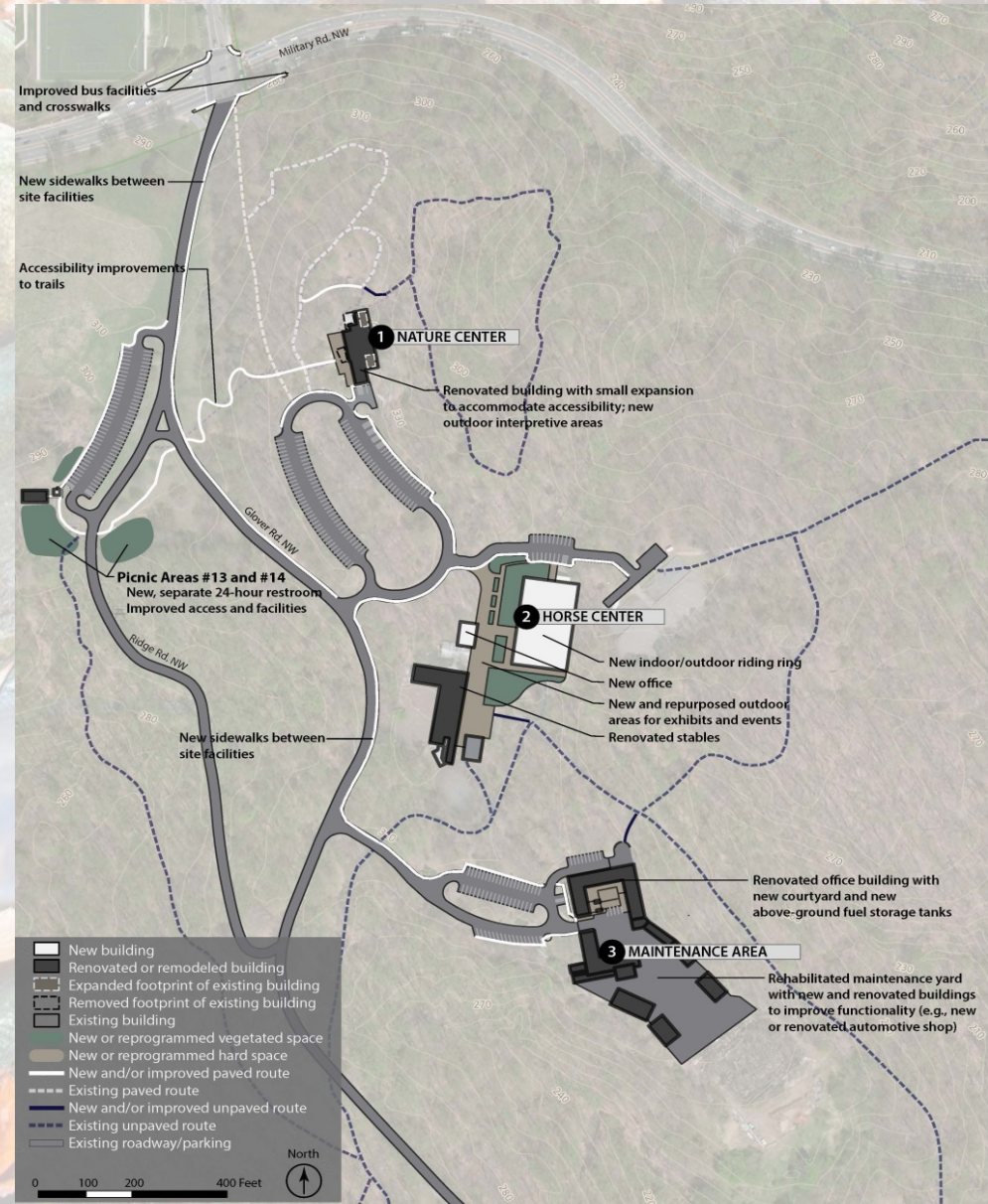
- Site improvement such as landscaping, trails, sidewalks, and signage
- Renovations to building interiors to improve accessibility, reconfigure interior spaces, and decrease maintenance backlog
- New indoor/outdoor riding ring
- New office building at the Horse Center
- Restrooms near picnic areas
- Improved multimodal access (public transportation, bikeshare, electric charging stations, and pedestrian access)

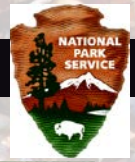




# Concept 2: Fix It

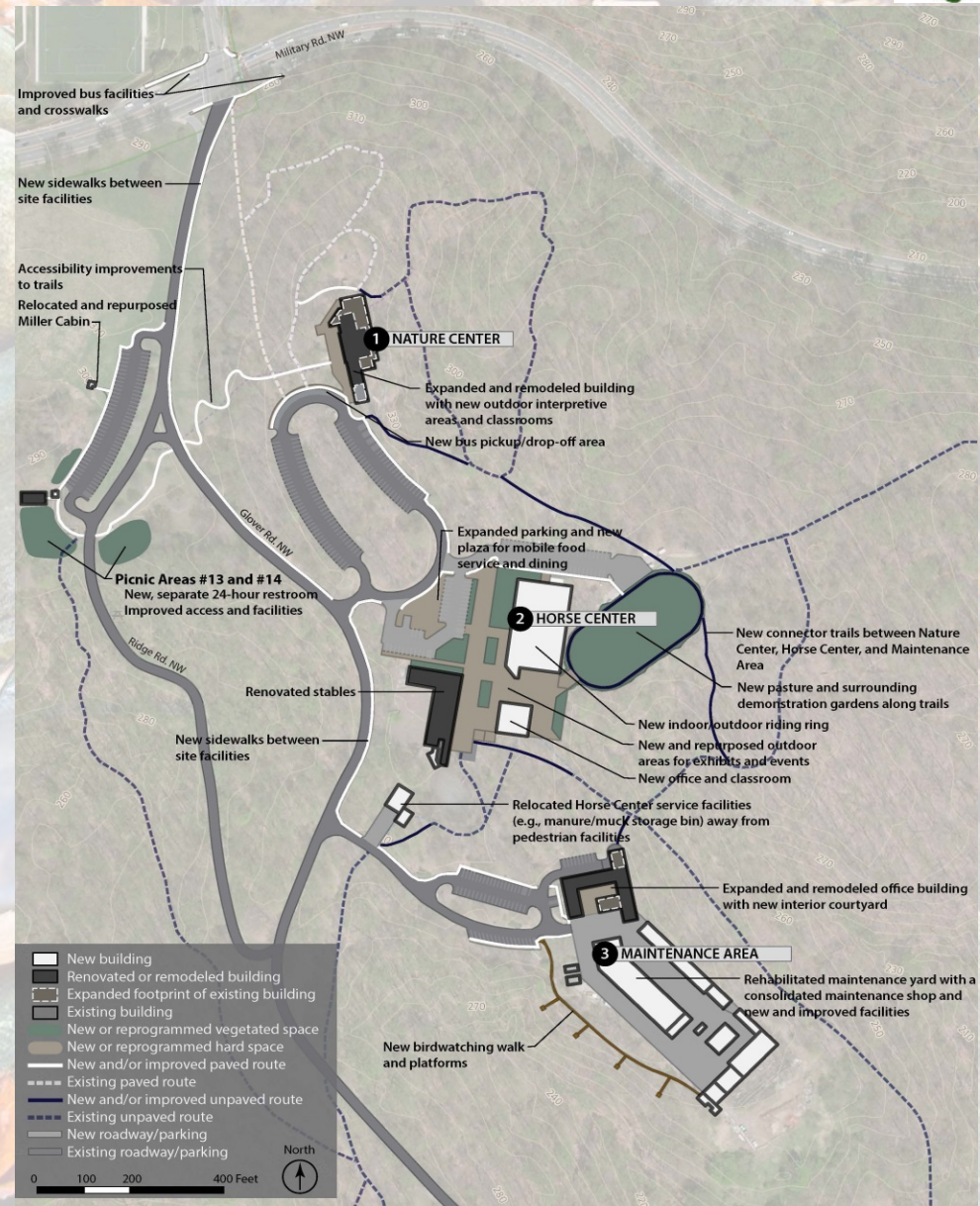
- Proposes necessary upgrades to improve the site functionality

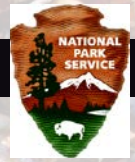




# Concept 3: Escape from the City

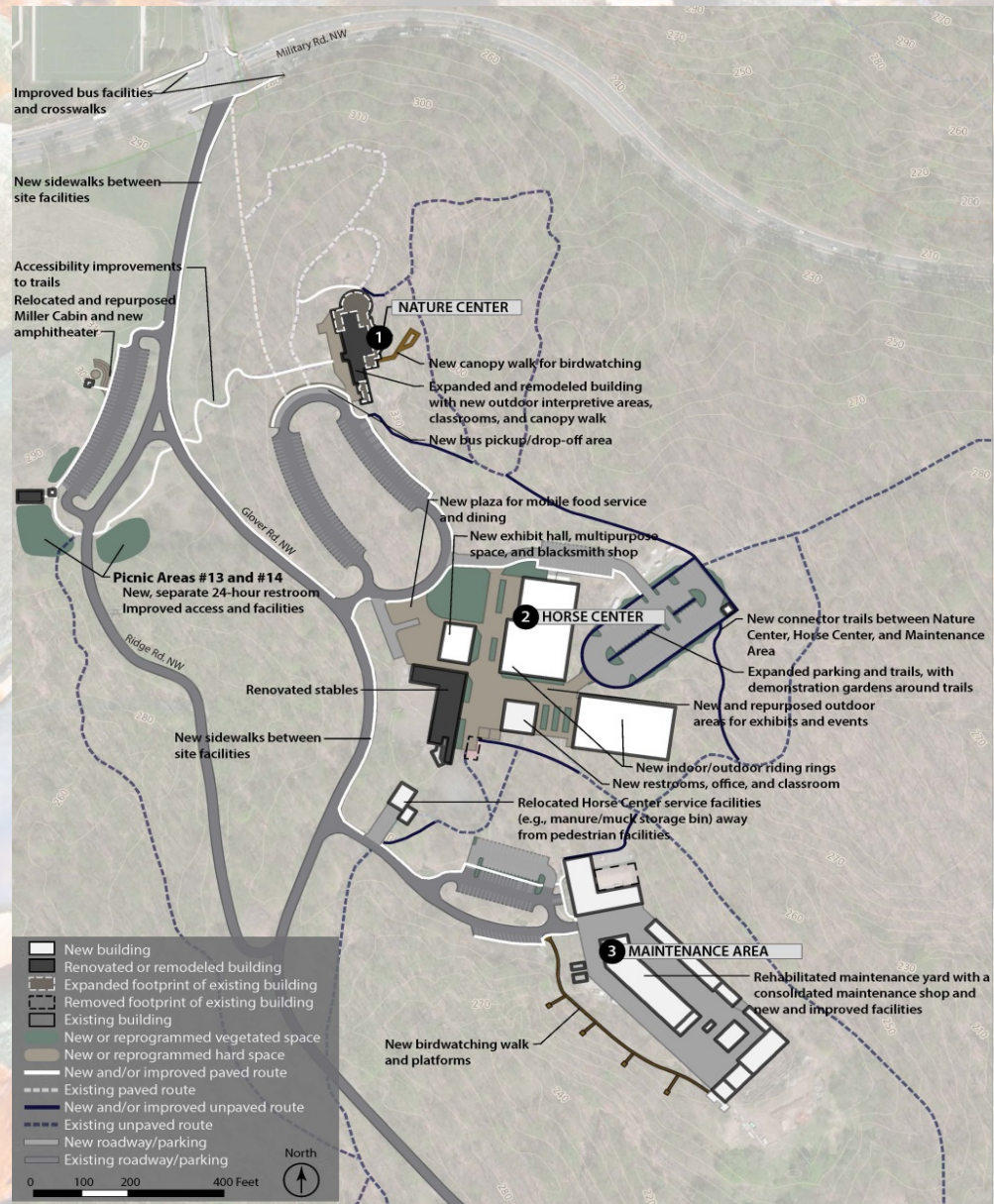
- Disperse visitor programs and activities to provide a more contemplative experience
- Expand educational outreach and improve amenities

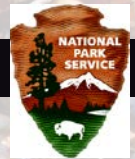




# Concept 4: Green Campus

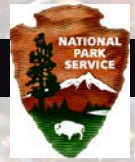
- Create a sustainable campus for park operations, resources, and visitor learning
- Showcase the latest environmentally-sustainable technology in future retrofits, rebuilds and visitor features





# Project Schedule

<b>Public Engagement (We are here)</b>	<b>Now through December 12, 2016</b>
Development of alternatives	Spring 2017
Write the plan and environmental assessment	Fall 2017
Public review of the plan and environmental assessment	Winter 2017
Decision document and implementation begins	2018



# How to Comment

- Public Comment Period October 31 - December 12
- Newsletter summarizes proposed actions for reference
- Enter into PEPC <https://parkplanning.nps.gov/rocrdcp>
- Comment card (leave it here with us or mail it)





# Thank you for joining us tonight!

