



ROCK CREEK
CONSERVANCY

Broad Branch and Linnean Stream Restoration Project

Marek Salanski

July 2018

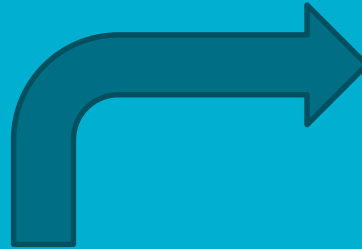


(pictures taken in May 2018)

Plantings Timeline

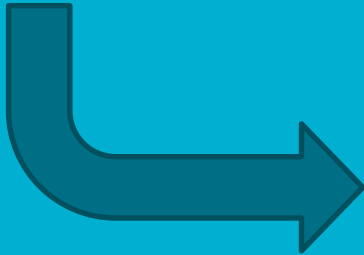
November 2016

Over 100 volunteers planted 125 trees and close to 50 shrubs at the Broad Branch site



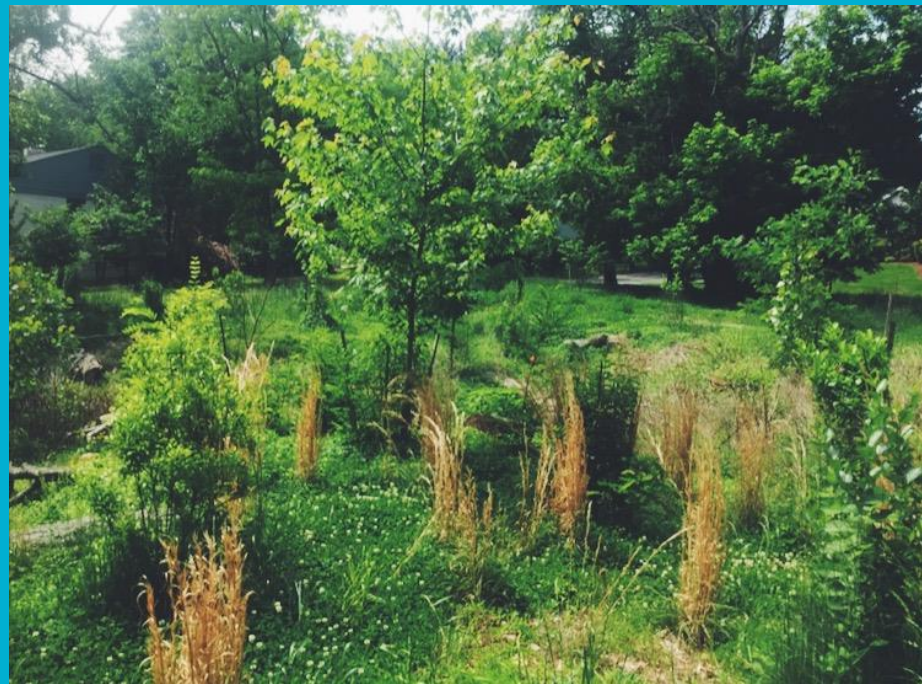
April 2017

an additional 2000 shrubs, grasses, and perennials were planted in Broad Branch as part of the restoration program.



December 2017

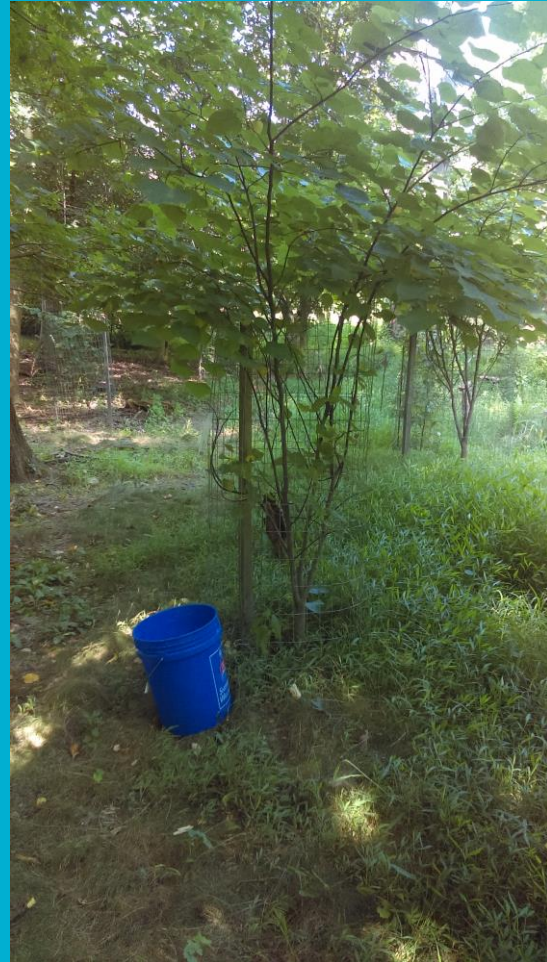
Linnean Tributary Tree Planting
With Casey Trees (30 trees planted)



(both pictures taken in May 2018)

Progress - Watering

- Watering regularly during the summer months is critical to maintain the health of young trees, plants, and shrubs.
- With high summer temperatures, young trees can need as much as 25 gallons of water weekly



Progress - Remove and/or Manage Invasive Species



Before



After



Removal/Management

- RCC hosts monthly invasive removal volunteer events
- RCC Summer Intern certified to remove invasives from national park lands by CaseyTrees and NPS program

Progress – Maintenance of Amenities

Clean Up and Prevention

- RCC's Extreme Clean Up Effort brings volunteers to site
- Volunteer events hosted by RCC
- Plan, order, and install trash pick up services, dog bag stations, and signage



Installed trash can along
Linnean Ave NW



Locked watering buckets

Next steps

Volunteers to Remove Invasives

RCC and NPS could set up volunteer events with the local community to remove stiltgrass

Volunteers to Water and Maintain Site

Events to water and clean up the site once a month would be extremely beneficial

Summer 2019 Intern

An intern for the summer of 2019 to maintain plants and remove invasives would provide support and continuity for the site